

June 2013
Number 12

President: Mike
Macdonald

Editor: Evette Hackman

Members: Seattle
Pacific University
Emeriti

Emeri-Times Newsletter



President's Corner: On Staying Connected

We serve a God who is omnipresent. He is closer to us than the air we breathe. Our God is everywhere at once. He loves us, and wonderfully, we are invited to be connected and in contact with him through prayer at any time.

What a blessing it is to be connected! In addition to the joy of being connected to God, there are other joys related to our connections with family, friends, and church.

Moreover, I feel so blessed to be connected with all of you, and with Seattle Pacific, our place of employment for so many years. Connections like this in our retirement years are so rare.

As your President, I am committed to keeping us connected in all kinds of ways. Consider the Emeri-Times newsletter, the Warm Beach summer social, the President's Fall Luncheon, the Provost's Spring Tea, SPU basketball and theatre.

For a strong, vibrant SPU emeriti community, we will want to continue to stay connected. If you have ideas or wish to volunteer to head up another way for us to be connected, please do not hesitate to contact me about it.

In the meantime, I wish you all a most blessed summer!

Mike Macdonald, Emeriti President



- Story Pole on SPU campus since 1979.
- See page 3 for History of the Story Pole.

Purpose for Emeri-Times

"to edify, encourage, connect emeriti faculty; to profile emeriti achievements (past and present); to provide news and information about members and SPU; to encourage emeriti to continue to be involved in world change." The Emeri-Times newsletter is distributed by the Office of the Provost.

Please let me know if you have recommendations (mmacdona@spu.edu or 425-881-3486).



Spring Tea with Provost Van Duzer

This March was our first Spring Tea with Provost Jeff Van Duzer who updated us on his first busy months as our Provost. It was a joyful celebration with over 40 emeriti and several department chairs. It is such a joy to celebrate spring with old friends from SPU campus. Of course the administrative assistants, Michelle McFarland and Addie Davis made excellent arrangements with Loida Arabia Kennedy in Catering.

Emeriti meet with President Martin

About 10 SPU emeriti met in June with President Dan Martin to reflect on vision and strategic planning for SPU's future. The President has been meeting with focus groups on this topic for several months and will discuss his recommendations this fall. We applaud President Martin for including the emeriti in this important process.



Theater Department—Fall Play

In the fall, when the first play of the school year is announced, emeriti will also receive an invitation to attend at no charge. Plan to meet along with other emeriti at the theater for the first matinee offering. We can sit together if that works and then meet for coffee and dessert afterwards. It is such a pleasure to be able to participate in theater offerings at SPU. See you there!

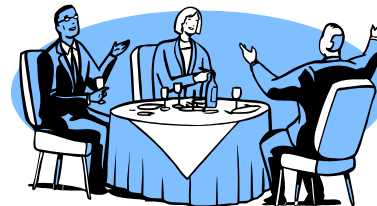


SPU Quiz (see answers on last page). This is a big change from SPC!

1. How many master's degree programs do we offer?
2. How many doctoral degree programs do we offer?
3. How many graduate students were enrolled Autumn Quarter 2012?

Warm Beach Summer Activity

Once again the Emeriti Faculty living in Warm Beach Senior Community is hosting a special summer luncheon for SPU Emeriti on Tuesday, August 6, 2013, at 12:00. We are especially honored to welcome President Dan Martin as the luncheon speaker. Please join friends at the Warm Beach Senior Community for this special event. The luncheon gathering will take place in the Beachwood Conference Room.



Last year over 40 people attended this fun occasion. Afterwards, those who wish to can tour the Warm Beach community. RSVP no later than July 29 to Bill Rosenberger by phone 360-722-7111 or email wrose@wavecable.com

Questions? Contact Bill Rosenberger or Mike Macdonald (425) 881 3486 mmacдона@spu.edu

See below for directions to Warm Beach and a list of emeriti living at there..

Directions to Warm Beach



From South: I-5 north to Exit 206, Lakewood/Arlington exit. Turn west (State Highway 531). After 2 miles you will come to a stop sign. Merge (right) onto the Lake Goodwin Road. At Lake Goodwin, Highway 531 will turn south. Do NOT turn. Continue on Lake Goodwin Road to the west for approximately 4 miles. The next stop sign will be Marine Drive. Turn right (North) on Marine Drive for 1 1/2 miles and you will see a yellow caution (blinking) light. This is the entrance (to the left) into the Senior Community. As you enter the community, continue straight ahead to the Beachwood wing. (Parking at Beachwood is limited). You may want to park to the left as you enter and then walk. Signs will direct you to the Soundview Office where there is ample parking. We will try to have someone in front of the Soundview Office giving further directions to Beachwood.

From North. Drive to Stanwood, take Marine Drive south to the Warm Beach Senior Community (4.5 to 5 miles). Continue south to the third entrance into the Community and then follow above instructions.

Emeriti who live at Warm Beach: Janet Buck, Dana Davis, Esther Helsel, Ivy Kerlee, Curtis and Carol Martin, Bill and Dorothy Rosenberger, Arlo Tiede, and Ray and Marilyn Wells.

Contact Bill Rosenberger (360) 722-7111 or e-mail wrose@wavecable.com

Did You Know??

This segment is brought to us by Adrienne Meier, SPU Archivist.

Did you know that the SPU story pole (full image on page one), a gift of the Class of 1971, was carved by Tlingit carver Abner Johnson? The symbols on the pole each have a different meaning and come together to tell the story of SPU. Their meanings are described in the program for the Pole's dedication Ceremony (a copy of which is part of the holdings of the SPU Archives.) The top figure is a Falcon, the school's mascot. Then comes a family of four—a symbol of Christian community—with the faces of the man and the woman representing the faculty and the two children representing the student body. Next is an orca whale, which represents Seattle. Finally, the Raven and the Eagle, symbols of the Tlingit tribe, represent the ties between SPU and south-eastern Alaska. The pole was originally placed outside the entrance to Gwinn Commons in 1979. With the construction of the current library in 1994, the pole was moved to its current location between McKinley and Alexander Halls.



EMERITI UPDATES JUNE 2013:

Dorothy Balch, spouse of late Wayne Balch, Retired from Music Department 1985. I had a memorable trip to Illinois to attend a reunion of 14 first cousins—all the living descendants of our grandparents who came from Sweden and settled in Rockford, Illinois, where we held the reunion. Another “trip” for me was to Ballard Hospital, then to Bayview Rehab, then home therapy and on to outpatient therapy—all to heal from a February knee replacement (a “trip” that I’m certain other faculty/spouses have traveled!) Thanks to God, family, friends and neighbors for assistance along this “journey.”

Ed Bauman, (Betty) retired Director of Engineering Programs; Head of Electrical Engineering in 2000.

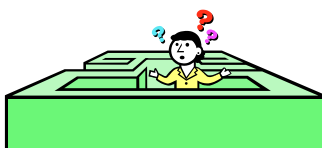
Betty & I have retired in Ocean Shores, WA. Keeping track of our 4 children, 11 grand children and 15 great grand children keeps us busy! In addition I helped to establish the Lighthouse Mentoring Project that has involved over 100 mentors at our local North Beach Junior and Senior High School. I now coordinate the efforts of these mentor volunteers who provide academic tutors and eleven clubs for the students. The Seattle Pacific Electrical Engineering Department donated several Lego robot kits for the Robotics & Electronics Club which I also lead. For more information about the Mentoring Project go to <http://lighthousementoringproject.wordpress.com>.

Janet Blumberg retired from Department of English in 2002. I'm happy to say that my main writing project is very near completion. I never thought it would take this long. And for anyone who recalls my son Caleb, he is now married and my daughter-in-law is getting her doctorate in Early Modern European and British history -- my own time period. She just passed her orals, so things are much more light-hearted for them these days. BTW -- as a tyke, Caleb attended Watson Groen Christian School (now Shoreline Christian) with Luke Reinsma's children and now he has married a lovely Miss Janine Van Vliet, another one of "those Christians who came from Holland," as my little son described the majority of his classmates back then. My son is currently working at McMasters-Carr and they live in Philadelphia. All the best to everyone from Janet.

Ruby Englund (David), retired from School of Health Sciences in 2007. I recently donated nursing capes from my collection to the SPU archives. One of the capes was worn by a nurse in Italy during World War 2. The original owner was an aunt of a former SPC student who had read about my collection of nursing memorabilia in the SPU alumni news. Generous donors gave money to build another display case for nursing antiques in the nursing skills lab in Watson Hall. Nursing uniforms from the 1940s and 1950s will soon be on display including Della Tiede's nursing cape. I have also placed in the SPU archives a collection of nursing textbooks from the 1930s from alumna Effie Snyder Gillespie. We regularly attend SPU basketball games and traveled to Bellingham for the tournament this year.

David Dickerson (Betty Ann) retired from Professor of English, Vice President of Academic Affairs 1992 (but moved on to Judson University for another 7 years.) In the past decade plus, our pattern has been teaching in China in the spring and in Kenya in the fall, supplemented by 8 days of reading AP exams in English in Louisville, KY. We will be doing all of this again in 2013, leaving for China April 29 and teaching an accelerated Shakespeare course (three 3-hour classes per week) in a month at Shandong University in Jinan. We expect to be back in Kenya from late September until just before Thanksgiving.

Evette Hackman (Robert) retired from Food and Nutritional Sciences, Family and Consumer Sciences 2004. Last year we did the Camino de Santiago pilgrimage in Spain and we loved it so much that we did another portion of the route again. This year we walked 300 miles across Spain and then we ended with a week vacation in Portugal. It is every bit as inspiring the second time as the first. This summer we are going to our church family camp at Seabeck and then during the rest of the summer, many groups of relatives will visit. It is a great pleasure to stay in touch with SPU folks. Life is good.



My life is broken down into segments: Eating, reading, walking, sleeping AND looking for things I had just a minute ago.

Dan Harris (Phyllis) retired Professor and Chair of Business & Economics; Director of Social & Behavioral Sciences in 1990. If you are interested in ancient history, we recommend a plane, boat, bus tour covering a wide range of countries. Consider www.travelwithallen.com (Seattle-based) which offers escorted land tours and cruises. Our cruise took about 25 days and covered Spain, Italy, France, Portugal, Canary Islands and Bahamas. In a short time you can experience hundreds of years of history.

Doris Heritage (Ralph) retired from Physical Education/Athletics in 2009. I had thought we would have some travel news but the Lufthansa Strike cancelled that one. So, I'm still here in Seattle, helping coach the runners at SPU and also at Shoreline Christian School. (That just goes to show we do not have to leave town to have a good time.)

Lucille Kelley (Robert) retired as Dean of the School of Health Sciences and Associate Professor of Nursing in 2012. Our travels lately have included Spain, Monaco, Italy, Croatia, Slovenia, Tunisia, Palm Springs and San Francisco.

Karl Krienke (Reita) Professor of Physics & Mathematics, Dean Natural and Mathematical Sciences 1997. We have not done much travel but here is an idea of how I spend my time: On 4/26/13 Paul Hodge (UW) and I are submitted our latest research paper to the refereed journal. Using frames from the Hubble Space Telescope we have identified and measured photometrically 82 previously unidentified young star clusters in the Andromeda Galaxy. Since my retirement, with Paul and sometimes with others, this is my nineteenth such paper to co-author. I am extremely fortunate to have HST access, friends with whom I can be a co-author and the computer power to do this. I also continue to swim a mile a day; lifetime total since 2/1977 is 8,844 miles. I am very thankful for the opportunity to do each.

Robert Larson (Anna Marie) retired as Associate Professor of Sociology in 1992. I continue to sing with the Everett Chorus of The Pacific Coast Norwegian Singers Association (PCNSA). Coming events include the Folk Life Festival at the Seattle Center, a full concert in Seattle and also in Everett, and then the PCNSA Sangerfest with the Grand Concert in Tacoma. I enjoy singing! Actually I enjoy music of many genre- chamber, choral, country, jazz and especially opera. As a young farm boy when chores were done I lay in front of our Philco listening to the Saturday broadcast of "the Met". Upon being stationed in Vienna I attended my first live performance of an opera. In August I will be attending the Seattle Opera presentation of Wagner's Ring Cycle.

AnnaMarie continues to receive 24/7 care. We enjoy morning coffee/lunch in the body-warming sun on our patio. In June I will be in Nebraska for the 125th Anniversary of Newman Grove, the 65th Class reunion ('48), and visit family.

David C. Le Shana (Becky) retired Past President Seattle Pacific University, 1982-1991. It was a joy to participate in the inauguration of President Daniel Martin and visit with the former presidents of SPU. I believe a great new chapter is ahead for the University!

Mike Macdonald (Karen) retired from European Studies, German and Philosophy in 2007. We got fellowship, sun and learning this winter. Mike studied French again in Paris and spent time with their youngest son studying Spanish in Guatemala and enjoying R and R in Belize. For her part, Karen spent 10 days in Arizona with her longtime girl friend. In the spring, Mike taught CS Lewis at SPU and a course on current Europe at Bellevue College. He participated in the annual Irish Festival at the Seattle Center on St. Patrick's Day, speaking on "CS Lewis: another Irishman saving civilization."

“I’m getting so old that all my friends in heaven will think I didn’t make it!”



David McKenna (Jan) retired President of Seattle Pacific University, 1968-1982. Everything came to a stop on February 20, 2013 when Jan had back surgery that involved fusion and instrumentation. She surprised the surgeon and the nurses by coming home early and beating the schedule for initial recovery. Since then, however, her patience (and mine) has been tested by the reality of long-term recovery from five years of pain with a discernible limp. I have also learned the meaning of "caregiver." With Jan I don't have to care for her; I get to care for her.

A bonus of 2013 was the announcement that our son-in-law, Ed Blews, was elected as President of the Council of Christian Colleges and Universities. Debra, our daughter, was elected as a Senior Fellow in International Law and Human Rights. Both of them are products of SPU, a point of pride.

Our goal now is to see Jan take the step of returning to church, shopping at Macy's, and flying to Kentucky with me on May 19 for the 90th anniversary of Asbury Theological Seminary where I have been asked to give the keynote address. If we can reach that goal, I look forward to a cruise or Hawaiian vacation so long delayed. Stay tuned for the next installment. With His joy, Dave and Jan.

Ken Moore (Virginia) retired Professor of Biology in 2007. Voy and I are currently in China. We are on the Yangtze River, very enjoyable, informative and quite a cultural experience. We have been in Xian and visited the ancient city as well as the Terracotta Warriors. In addition we were at Chongqing, the temporary capital for Chang Kai Shek during WWII. Cities are huge, dwarfing NYC, traffic is horrendous and air pollution is worse than one can imagine.

Ray Myers (Ruth) retired professor of Science Education. Retired – Yes. Fully? No. We have been involved in many activities this year. At home in Greenville, we enjoy interacting with two of our three children and our grand/great children. Ray continues to teach Geology during Interterm and Astronomy during fall and spring at Greenville College. A new telescope has captured his attention this spring. He is challenged to dig deep in Bible Study for Sunday School class at the Greenville FM Church.

Throughout the year, both of us are involved in co-directing the Washington Junior Science and Humanities Symposium. In March, we returned to SPU for the WJSHS science research presentations and competition for the military-funded scholarships. SPU gives a matching scholarship to the first, second and third-place winners if these winners choose to attend SPU. This year, we added a new challenge to the WJSHS program —making arrangements for 20 eighth graders to come to SPU campus to observe and learn how to do science research -- in preparation for the 9th-12th grade symposium presentation next year.

As of this writing (May 1), we are accompanying five of the oral presenter winners and one poster winner to the National JSHS where several hundred high school students will be judged. An outcome and highlight of last year's National JSHS: we were chosen to be chaperones to accompany 13 U.S. first-place NJSHS and ISEF winners ISEF to London, to attend a two-week London International Youth Science Forum. Our artist son made connections for us with lace-making friends of his, and during some free time we were given a personal tour, via the riverboat cruise on The Thames, to Greenwich to visit the longitudinal meridian on the hill. Ray braved the roundabouts and highways as we drove out into the countryside to Stratford-Upon-Avon. Another friend of our son gave us a personal tour of this unique town and made connections for us to get a personal tour of the Shakespearean theater. The drive back through the Cotswold was a geologic delight! Back home, Ray teaches a 2-week geology course at SPU in June.

Annalee R. Oakes (Phillip) retired Dean of Health Sciences/Graduate Director Health Sciences 1998. After our granddaughter graduated from Montana State University, Bozeman, our airplane travels dropped significantly. When I became super busy with teaching nursing students at Northwest University during Fall Semester, I assumed rest would come in spring. That did not happen for an excellent reason: we had an extra large class of junior nursing students who needed more faculty. The Parish Nursing role, now called Faith Community Nursing, has continued dealing with special needs of families in transition with spousal or parents' care when resources are tight and Christian environments are almost totally filled.

We are anticipating a great family reunion in August with our children, grandchildren great grandchildren and others on Columbia River Bed and Breakfast. We are celebrating 60th wedding anniversary, birthdays, other wedding anniversaries and the first birthday of great granddaughter Serafina. Many of those in attendance graduated from SPU.

Marilyn Severson, retired from Foreign Languages and Literature in 2004. Marilyn Severson and two friends enjoyed three weeks in France during April. After four days in Paris the trio went to Cherbourg to visit Marilyn's grand-nephew who spent October-April assisting in English classes in two high schools. Then it was off by train to Avignon where the travelers picked up a rental car and drove to Pernes-les-Fontaines where they spent two weeks enjoying a rental house. In spite of great experiences in youth hostels while traveling with European Quarter students, Marilyn thinks the time has come for more amenities:-) Some highlights of the time in Provence include great meals and visits to hilltop towns such as Gordes, Roussillon, and Lacoste. Provence is beautiful in the springtime--blossoming fruit trees almost everywhere, flowers, so many shades of green!

Ross F. Shaw retired from Biology and Director of Blakely Campus in 1996. My wife, Barbara, passed away January 18, 2013. They had been married for 60 years. I am moving to Greenville, Illinois to be near my daughter, Kim, and son, Bradley, and their families.

Lilyan Snow (Don), retired Professor of Nursing. Don and I are doing well, at the end of our second year in Skyline. We love being high in the air and watching the ferry terminal and the always-busy port. Recently, we had a birds-eye view of unloading Big Bertha and all of her associated accoutrements. We're thankful for our fine neighbors and the warm atmosphere here. A bonus is the "two person reading group" with my friend Alice, a retired Unitarian minister. We've just finished Crossan's "The Birth of Christianity" and are beginning Amy-Jill Levine's "The Misunderstood Jew," (Jesus in his Jewish context), both of them great reads.

Our SPU grads, Andy and Julie, bought our house, including all the gardening tools; we love visiting them and appreciating their work in our gloriously blooming former garden (and not forgetting Sophie, who will be 14 in July). Last summer we took two great road trips for family and high-school reunions, to Scottsbluff, NE and Santa Maria CA, and a flying visit to Portland, ME. The California trip included a visit to our 2 1/2 year old great-grandson, Ezra Snow, a great charmer. While we were in Nebraska, the cousins encouraged us to put together a reunion to celebrate our 60th anniversary--the first trip to the Northwest for many of them. So far the guest list is 25+ and rising! Our summer trip this year will be by train to Glacier National Park. This will be our fourth long trip together (after France, Mexico, and the British Isles) with our oldest son, John, and his family, Denise and Victoria. We've enjoyed traveling out of the country with them several times, and we know this trip will be great. I wish God's blessings on you all.

Bob Weathers (Judy) retired Professor of Physical Education and Exercise Science 2010. I completed the WSU Beach Watchers training and have so far volunteered over 180 hours doing various research and education tasks on marine science. Judy and I took a 20-day Mediterranean cruise in August and September visiting the east, west, north and south. We also took our younger son and his family to Maui, and we went to Cancun to celebrate our 45th wedding anniversary.

Raymond Wells (Marilyn) retired Chair of Philosophy in 1993. I am presently recovering from my broken left hip at Warm Beach Nursing Home. While here I have joined the Mens Chorus, called the "Beachwood Boys". I enjoy singing with about 30 men from this area. We enjoy having the "Emeriti" with us at our summer luncheon in August. I would welcome a visit from anyone who visits this area.!

Dick Wood (Priscilla) retired Professor of Mathematics and Computer Science 2003. Dick and Priscilla moved to Cristwood Park in February. Our new address is 350 North 190th Street #C515, Shoreline, WA 98133-3885. We decided to go cell phones only/no landline. Dick can be reached at 206-849-0206; Priscilla can be reached at 206-849-6120. We love living here along with many folks with former SPU connections.

Last summer we flew to Hamburg, Germany, visited there and then went to Berlin before traveling to the Elbe River. We sailed south to the southern part of the former East Germany and then traveled by motorcoach to Prague, Czech Republic. We love the river ships! Our more recent trips have been back and forth numerous times between Kent and Shoreline moving and preparing our house for sale. We will now leave for our yearly trip to San Luis Obispo, California. We hope to visit relatives along the way.



My wild oats have turned into prunes and All Bran.

Welcome New Faculty Emeriti Gary Fick and Gerry Marsh

For nearly 40 years as part of the SPU faculty **Gary Fick** has served the library and University as bibliographic specialist in the sciences, bibliographic online services coordinator, associate director of learning resources, University librarian and director of learning resources, science and health sciences library specialist, information literacy coordinator, and sciences and psychology librarian...

Gary's colleagues commend him for his excellence in teaching, dedication to student success, and commitment to mentor and share his talents and time with younger colleagues...He became full professor in 1989. As a faculty member, he has been elected to, served on, and chaired numerous faculty committees including Faculty Council. His long record of dedicated service to the University has impacted SPU governance, curricula, academic resources, and student life. As one colleague explained, he is a "model of persistence over the long haul." ...His service has advanced libraries throughout the region and beyond. He has been a mentor and advisor to many librarians.

Gary and his wife, Carol, have been married for 42 years. They have two grown children, Jennifer (married to Derick with children Ella, Abby, and Sofia) and Christopher (married to Jennie.) Gary enjoys long walks with Carol, reading novels and nonfiction, and watching movies. In retirement he plans to read and write, and - along with Carol—design and build a new house, travel, and spoil their grandchildren.

Excerpt from the official SPU Retirement Program.

Gerry Marsh taught music in public junior high and senior high schools for 30 years before taking on his second career at Seattle Pacific University. Since the fall of 1998, he has served as the Wind Symphony conductor, the director of music technology, and a music instructor. SPU music students have benefitted from his extensive experience as an educator, a performer, a jazz musician, a conductor, and a choirmaster...

Gerry is a published composer and arranger, earning numerous awards and commissions. He was the composer-in-residence for SPU's Center for Worship. For his first published work...he arranged classical-style settings for the commercial jingles of McDonald's, Burger King, and Jack in the Box—a work he called the "Hamburger Suite." Since then he has written music for special events and building dedications, weddings and even the 120th anniversary of Seattle's First Free Methodist Church. His "Reconciled: A Gospel Oratorio" was a finalist for the Arlin G. Meyer Prize...He received awards and citations from the Seattle Music and Arts Foundation and the Edmonds Music and Arts Club. In 1998 he was inducted into the inaugural Washington Music Educators Association Hall of Fame.

Gerry and his high school sweetheart, Marilyn, were married in 1966 and today have two married sons and four grandchildren, whom Gerry calls "the joy of our lives." During his retirement he is looking forward to editing and preparing his music for publication as well as composing new works.

"I realize what a privilege I have had to share so many extraordinary musical and professional experiences with such talented and devoted friends," he says. "I will forever be grateful to my God, the Master Creator, for sending Jesus Christ to come into my life and allow me to be a vessel of creativity for His glory."

Excerpt from the official SPU Retirement Program.



In memory of ...

Vivian Larson: According to President Daniel Martin's letter sent to Faculty and Staff, "Faculty member Vivian Larson passed away on January 16. She was 104 years old. Her daughter called us to say that Seattle Pacific was her mother's "heart and soul."

Professor Emerita Larson came to SPU in 1940. She held many different positions in her 37-year tenure, including professor of education, director of teacher placement, and director of elementary student teaching. After being granted emerita status in 1973, she continued working in the School of Education as coordinator of student placement services.

According to the book *Seattle Pacific University: A Growing Vision*, "Her knowledge, her deep interest in the student, and her complete dedication to the College while serving the interests of the public schools made the name 'Miss Larson' synonymous with teacher education throughout the state of Washington."

A retirement tribute from the Board of Trustees in the late-1970s stated that "thousands of Seattle Pacific College graduates have been launched into successful and useful teaching careers through her inspired teaching, counsel, and placement services."

Larson was recently featured in *Response* magazine, and a record number of readers wrote in with their **memories of her extraordinary passion for teaching.**



Don Kerlee: In a letter to faculty and staff, Bruce Congdon states:

I want to let you know that one of our esteemed emeritus faculty members, Donald Kerlee, passed away on December 7, 2012. He was one of the great contributors to building this University.

Don was a Seattle Pacific alum, class of 1951, with a BS degree in Physics. After graduation he went on to earn a PhD in Mathematics and Physics from the University of Washington, and did post-doctoral fellowships at Victoria University, Manchester, England, and Columbia University. He joined the Seattle Pacific College faculty for the first time in 1956, as assistant professor of physics. He rose through the ranks and served as chair of the Physics Department from 1963-68. He also gave leadership to our faculty research efforts, as both Assistant to the President in Grants and Research (1966-68) and Director of Research (1968-69).

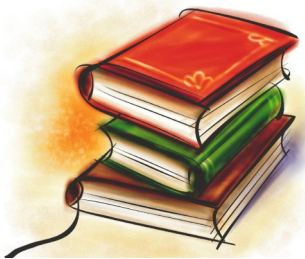
In 1969 he accepted an appointment as vice president and academic dean at Roberts Wesleyan College, in his final year there serving as acting president. He returned to Seattle Pacific in 1974, and from that time until he retired in 1990, he served in several significant roles. In addition to teaching Computer Science and Physics, he served at various times as director of graduate studies, director of institutional research, and as the first director of what is now the Blakely Island Field Station.

Even though he and I were together at SPU for only a few years, I remember Don as kind and soft-spoken, a clear thinker, and a wise leader. He faithfully attended emeriti faculty events until recently, and was a blessing to all whose lives he touched. In an understatement of which few others would be capable, Don, in the letter announcing his retirement, concluded, "It has been a privilege and high honor to serve Free Methodist Higher Education over the past

EMERITIMES
c/o Office of the Provost
3307 Third Ave. West Suite 102
Seattle, WA 98119

Academic Calendar

September 9-10, 2013	Faculty Retreat, Camp Casey
September 27, 2013	New Student Convocation, 3 PM, Royal Brougham Pavilion*
September 30, 2013	Monday, Class Instruction begins
October 1, 2013	Opening Convocation, 11 AM, First Free Methodist Church*



* Faculty wear Academic Regalia

Answers to page 2 quiz: 1) 17 2) 5 3) 828 4) 3238